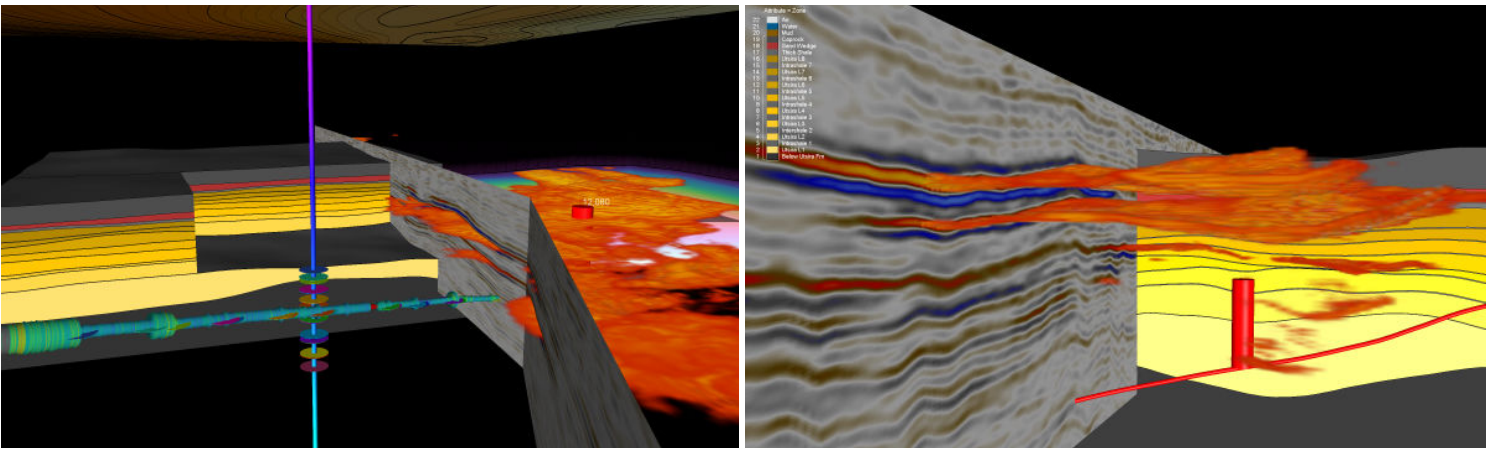




# EarthVision-CCS

by Dynamic Graphics, Inc.

EarthVision-CCS (EV-CCS), developed by Dynamic Graphics, Inc., is software for workflows related to Carbon Capture and Storage. Available for Windows® and Linux® OS, EV-CCS offers tools for Earth modeling, data fusion, 3D & 4D visualization, and integrated well planning, and is ideal for model building & verification, feasibility studies, and permitting.



The Sleipner CO2 Reference Dataset is courtesy of The Sleipner Group (Equinor Energy AS, ExxonMobil E&P Norway, AS LOTOS E&P Norge AS, and KUFPEC Norway AS).

## FOR MODEL BUILDING & VERIFICATION, EV-CCS INCLUDES:

### ONE-TIME DATA ENTRY

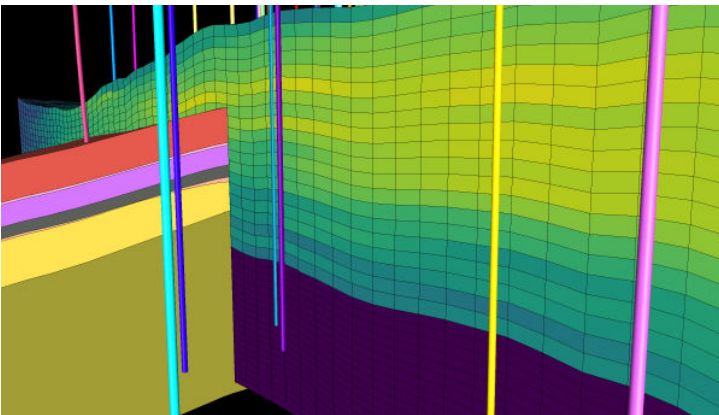
- Intuitive, user-guided model building with EarthVision's WorkFlow Manager (WFM) interface.
- Include fluid contacts, salt domes, diapirs, complexly faulted structures, and properties.
- Optional scripted workflows for rapid model updates.

### ACCURATE OUTPUTS

- Model-derived 2D maps & cross-sections; 2D and 3D log displays; volumetric analyses.
- Geologic model export to industry-standard simulator formats.

### DATA FUSION & ANALYSIS

- Advanced 3D & 4D visualization for static and dynamic (time-dependent) data.
- Integrate field wide data: seismic, simulation, well logs, well events/status, induced seismicity, infrastructure, etc.
- 3D, interactive statistical analysis tools.
- Injection well planning, in context, with the Integrated Well Designer™.



Data courtesy of RMOTC and US DOE

## ABOUT US

DGI prides itself on client-driven and solutions-focused relationships.

Since 1969, we have partnered with our clients in an agile fashion to solve their most challenging geospatial problems by rapidly delivering innovative, customized software solutions for high-risk environments.

We are trusted industry experts dedicated to future software integration within the energy, geospatial, aviation and government sectors.



### HEADQUARTERS

Dynamic Graphics, Inc.  
3697 Mt. Diablo Blvd., Suite 330  
Lafayette, CA 94549  
+1 510-522-0700  
www.dgi.com | info@dgi.com

### LEGAL NOTICE

© 2024 Dynamic Graphics, Inc. All Rights Reserved.

No part of this publication may be reproduced, translated, or transmitted in any form or by any means, electronic or mechanical, including photocopying, recording, use or capture in any information storage or retrieval system, or otherwise, without the express prior written permission of Dynamic Graphics, Inc.

The information contained in this document is subject to change without notice and should not be taken as a commitment, representation, or warranty on the part of Dynamic Graphics, Inc. Further, Dynamic Graphics, Inc. assumes no responsibility for errors that may appear in this document.

Dynamic Graphics, EarthVision, and the logo(s) shown below are trademarks of Dynamic Graphics, Inc. that are registered trademarks or the subject of pending applications in various countries.

All other trademarks belong to their respective owners.



rev.02272024.

## FOR FEASIBILITY STUDIES, EV-CCS OFFERS:

### EASY TO USE MODEL BUILDING

- Streamlined model building using the WorkFlow Manager's geologically oriented process.
- Seamless integration of seismic interpretation.
- Customizable, reproducible workflows.

### RAPID DATA INTEGRATION

- Integrate geological, geophysical, engineering, and production/injection data.
- Combine static, dynamic, and geomechanical models to understand surface dynamics.
- Identify viable CO<sub>2</sub> storage sites and optimize injection strategies.

### INJECTION AND CONFINING ZONE CHARACTERIZATION TOOLS

- Characterize potential injection zones: capacity, permeability, porosity, and overall suitability for CO<sub>2</sub> storage.
- Verify confining zones: ensure prevention of CO<sub>2</sub> migration and long-term containment.

### ANALYTICAL TECHNIQUES FOR CO<sub>2</sub> STORAGE PREDICTION

- Volumetric assessment for accurate prediction of CO<sub>2</sub> storage capacity.
- Site ranking tools for informed decision-making.

## FOR ANALYSIS USED IN CLASS II/VI PERMIT APPLICATIONS, EV-CCS PROVIDES:

### A COMPREHENSIVE DATABASE

- Include subsurface data, pipeline / hub infrastructure.
- Import and analyze CO<sub>2</sub> plume simulation from industry-standard simulation software.

### ROBUST ANALYTICAL TOOLS

- Monitor & investigate induced seismicity; evaluate geologic and mechanical conduit potential.

### STREAMLINED WORKFLOWS

- Output plots and images; rapid revisions as models are updated.

